

# User's Guide

L1900J  
L1900R  
L1900E

**M**ake sure to read the **Important Precautions** before using the product.

Keep the User's Guide(CD) in an accessible place for future reference.

**S**ee the label attached on the product and quote this information to your dealer when you require service.

**This unit has been engineered and manufactured to ensure your personal safety, however improper use may result in potential electrical shock or fire hazards. In order to allow the proper operation of all safeguards incorporated in this display, observe the following basic rules for its installation, use, and servicing.**

## On Safety

Use only the power cord supplied with the unit. In case you use another power cord, make sure that it is certified by the applicable national standards if not being provided by the supplier. If the power cable is faulty in any way, please contact the manufacturer or the nearest authorized repair service provider for a replacement.

The power supply cord is used as the main disconnection device. Ensure that the socket-outlet is easily accessible after installation.

Operate the display only from a power source indicated in the specifications of this manual or listed on the display. If you are not sure what type of power supply you have in your home, consult with your dealer.

Overloaded AC outlets and extension cords are dangerous. So are frayed power cords and broken plugs. They may result in a shock or fire hazard. Call your service technician for replacement.

Do not Open the Display.

- There are no user serviceable components inside.
- There are Dangerous High Voltages inside, even when the power is OFF.
- Contact your dealer if the display is not operating properly.

To Avoid Personal Injury :

- Do not place the display on a sloping shelf unless properly secured.
- Use only a stand recommended by the manufacturer.

To Prevent Fire or Hazards:

- Always turn the display OFF if you leave the room for more than a short period of time. Never leave the display ON when leaving the house.
- Keep children from dropping or pushing objects into the display's cabinet openings. Some internal parts carry hazardous voltages.
- Do not add accessories that have not been designed for this display.
- During a lightning storm or when the display is to be left unattended for an extended period of time, unplug it from the wall outlet.

## On Installation

Do not allow anything to rest upon or roll over the power cord, and do not place the display where the power cord is subject to damage.

Do not use this display near water such as near a bathtub, washbowl, kitchen sink, laundry tub, in a wet basement, or near a swimming pool.

Displays are provided with ventilation openings in the cabinet to allow the release of heat generated during operation. If these openings are blocked, built-up heat can cause failures which may result in a fire hazard. Therefore, NEVER:

- Block the bottom ventilation slots by placing the display on a bed, sofa, rug, etc.
- Place the display in a built-in enclosure unless proper ventilation is provided.
- Cover the openings with cloth or other material.
- Place the display near or over a radiator or heat source.

Do not rub or strike the Active Matrix LCD with anything hard as this may scratch, mar, or damage the Active Matrix LCD permanently.

Do not press the LCD screen with your finger for a long time as this may cause some afterimages.

Some dot defects may appear as Red, Green or Blue spots on the screen. However, this will have no impact or effect on the display performance.

If possible, use the recommended resolution to obtain the best image quality for your LCD display. If used under any mode except the recommended resolution, some scaled or processed images may appear on the screen. However, this is characteristic of the fixed-resolution LCD panel.

## On Cleaning

- Unplug the display before cleaning the face of the display screen.
- Use a slightly damp (not wet) cloth. Do not use an aerosol directly on the display screen because over-spraying may cause electrical shock.

## On Repacking

- Do not throw away the carton and packing materials. They make an ideal container in which to transport the unit. When shipping the unit to another location, repack it in its original material.

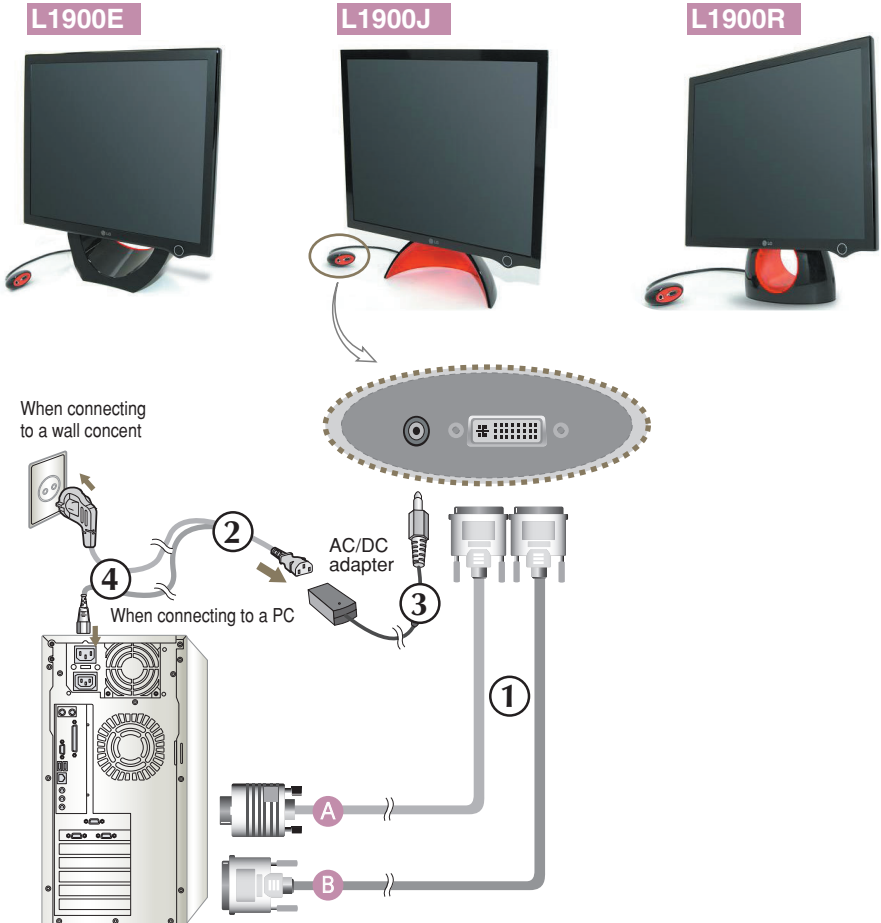
## On Disposal

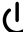
- The fluorescent lamp used in this product contains a small amount of mercury.
- Do not dispose of this product with general household waste.  
Disposal of this product must be carried out in accordance with the regulations of your local authority.

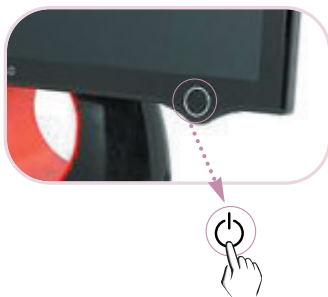
## Using the Computer

1. Connect the signal cable. When attached, tighten the thumbscrews to secure the connection. ①
  - A Connecting with DVI-Analog signal input cable
  - B Connecting with DVI-Digital signal input cable
2. Use after connecting power cable ② to AC-DC power adapter ③ and inserting it into outlet ④ (Voltage is automatically controlled.)

 **Tip** Product color represented here may differ from actual product color that customer purchased.



3. Touch  button on the front switch panel to turn the power on. When monitor power is turned on, the '**Self Image Setting Function**' is executed automatically. (Only Analog Mode)

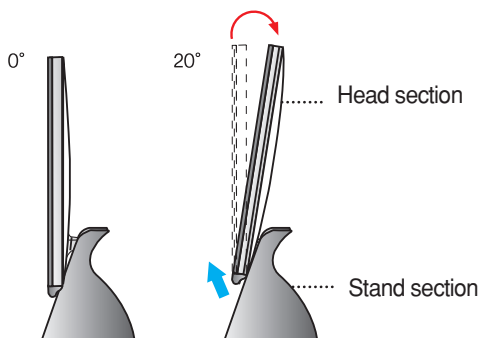


## NOTE

'**Self Image Setting Function**'? This function provides the user with optimal display settings. When the user connects the monitor for the first time, this function automatically adjusts the display to optimal settings for individual input signals. Press **Forte Manager Program** -> **Picture** -> **Tracking** -> **Auto Setup** if screen adjustment is needed while using the product or if you want to operate this function manually, or, run Option of **Forte Manager Program** -> **Preset Provided When Delivered**. Otherwise, you may execute the '**Factory Default Preset**' option on the OSD adjustment menu. However, be aware that this option initializes all the menu items except '**LANGUAGE**'.

## To adjust angle of the product ~ ~

1. Adjust location of head section comfortable to use.
  - Tilt Range : 0°~20°



Do not put your hand (finger) between head section and stand section when adjusting angle of screen. Your hand (finger) may get caught or wounded.

**This product provides a program(Forte Manager CD) which makes users convenient to adjust various screen conditions including Brightness, Tracking or Resolution by using mouse, without adjusting each button.**



This software requires Microsoft Internet Explorer 6.0 or greater.

---

## ■ Forte Manager Program Installation Procedure

- 1) Close all other applications before installing Forte Manager program.
- 2) Installation screen appears automatically when Forte Manager CD-ROM is inserted.
- 3) Forte Manager Install Shield Wizard start screen appears.
- 4) Select [Installation Language].
- 5) Click "Next" when Installation Wizard screen appears.
- 6) Click "Next" after selecting "I accept the terms of the license agreement."
- 7) Click "Next" after selecting a function to install.
- 8) Click "Install."
- 9) Installation status screen appears.
- 10) Click "Finish" after selecting "Yes, I want to restart my computer now."
- 11) Forte Manager execution icon is created on background screen when installation is completed.

\*Select [Execution] after pressing [Start] button when installation screen does not appear automatically.

\*\*Select OK after entering D:\SETUP.EXE (assumed CD-ROM Drive is D:\)



### **To use monitor with the best quality~ ~**

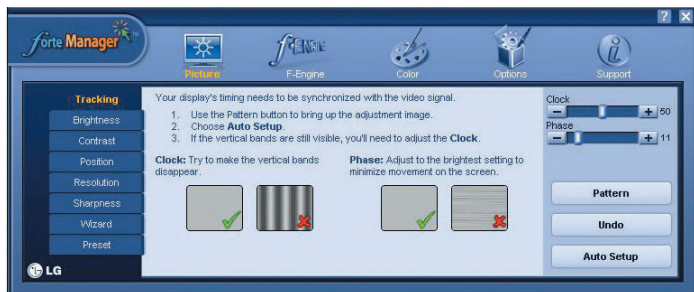
Install Users Guide CD monitor driver file provided with accessories.

\* Please refer to 'Monitor Driver Installation Guide' to install monitor driver.

---

## ■ Forte Manager Program Function

To change or adjust Tracking, Brightness, Contrast, Position, Resolution, Sharpness or Preset of Display, use or select Forte Manager program.  
**\*Tracking and Position are supported only when signal is in analog mode.**



### **PICTURE**

- Tracking, Brightness, Contrast, Position, Resolution, Sharpness, Wizard, Preset



### **f-Engine/Presets**

- MOVIE, TEXT, NORMAL, USER, Preset



### **Color**

- Color Temp. RGB, Color Calibration, Preset



### **Options**

- Preferences, Power Indicator, Preset



### **Support**

- Update, Help, Asset Id, Version, Preset

## L1900E

### Front Panel Controls



1

### Rear



2

Control	Function
<b>1 Power Button</b>	Product may be turned on when you touch the button, and turned off when you touch it once again. * Check Power Indicator after touching Power Button.
<b>2 Power Indicator</b>	Power indicator is blue or red when the product is on, and it automatically blinks in Sleep mode(Energy Saving.)

#### NOTE

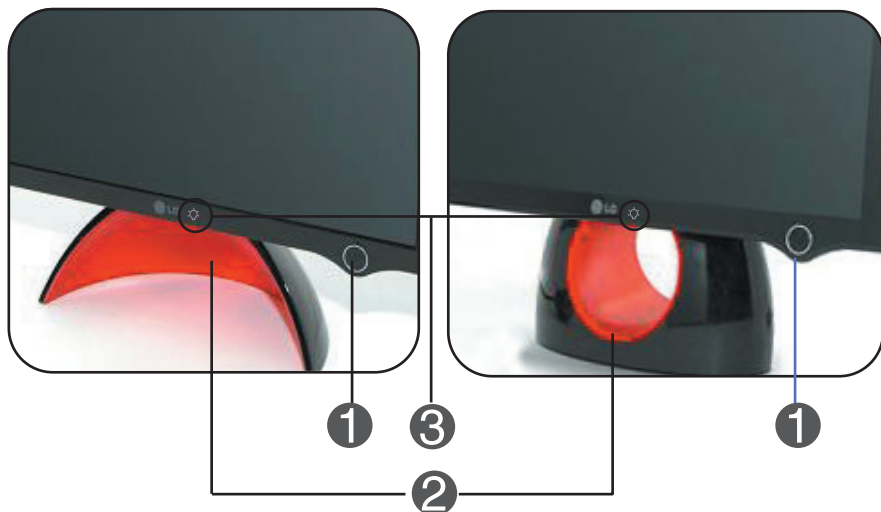
#### To turn on/off the power indicator manually ~ ~


- Select Options of Forte Manager Program -> Power Indicator -> On/Off to manually turn on/off the power indicator.

## L1900J

## L1900R

### Front Panel Controls



Control	Function
<b>1</b> Power Button	Product may be turned on when you touch the button, and turned off when you touch it once again.
<b>2</b> Power Indicator	Power Indicator is blue or red when the product is on and it automatically repeats from dark to bright mode in Sleep mode (Energy Saving).
<b>3</b> 	<p><b>[L1900J]</b> The button underneath the picture is for adjusting brightness of Power Indicator. * Four-grade brightness adjustment is possible by lightly touching with a finger.</p> <hr/> <p><b>[L1900R]</b> The button underneath the picture is for turning on/off Power Indicator. * To turn on/off Power Indicator, touch lightly with a finger.</p>

#### NOTE

- Power Button is not operated before Display is completely exhibited.

DDC/CI(Display Data Channel Command Interface) is communication protocol for communications between PC and monitor.

DDC/CI makes it possible to adjust and setup detailed functions on PC instead of the monitor OSD.

Monitor can be adjusted with PC by connecting communication between PC and monitor when DDC/CI is ON, and monitor cannot be adjusted with PC because communication between PC and monitor is disconnected when DDC/CI is OFF.

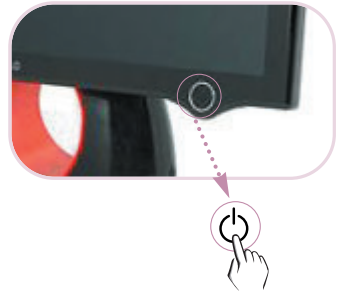
 **Tip** Especially, Forte Manager program must be operated in DDC/CI ON status because it does not operate normally in DDC/CI OFF status.

---

## ■ DDC/CI ON/OFF Function

Display is on when Power button is touched, and DDC/CI is ON/OFF when Power button is touched more than a few seconds.

\* **Initial Setup Status is DDC/CI ON.**



## NOTE

- However, DDC/CI function is operated only once when Display is on, and it is not operated when Display is turned off by touching Power button.

Check the following before calling for service.

<b>No image appears</b>	
<p>● <b>Is the power cord of the display connected?</b></p>	<ul style="list-style-type: none"><li>• Check and see if the power cord is connected properly to the power outlet.</li></ul>
<p>● <b>Does power indicator blink or from dark to bright mode is repeated?</b></p>	<ul style="list-style-type: none"><li>• If the display is in power saving mode, try moving the mouse or pressing any key on the keyboard to bring up the screen.</li><li>• Try to turn on the PC.</li></ul>
<p>● <b>Do you see an "OUT OF RANGE" message on the screen?</b></p>	<ul style="list-style-type: none"><li>• This message appears when the signal from the PC (video card) is out of horizontal or vertical frequency range of the display. See the 'Specifications' section of this manual and configure your display again.</li></ul>
<p>● <b>Do you see a "CHECK SIGNAL CABLE" message on the screen?</b></p>	<ul style="list-style-type: none"><li>• This message appears when the signal cable between your PC and your display is not connected. Check the signal cable and try again.</li></ul>

## Display image is incorrect

● **Display Position is incorrect.**

- Press **Forte Manager Program --> Picture --> Tracking-->Auto Setup** to adjust screen automatically to the optimal condition, which fits to the current mode.  
Configure by directly adjusting **Forte Manager Program --> Picture--> Position** if adjusted condition is dissatisfactory

● **On the screen background, vertical bars or stripes are visible.**

- Press **Forte Manager Program --> Picture --> Tracking-->Auto Setup** to adjust screen automatically to the optimal condition, which fits to the current mode.  
Remove vertical lines by adjusting **Forte Manager Program --> Picture --> Tracking -->Clock**, if adjusted condition is dissatisfactory.

● **Any horizontal noise appearing in any image or characters are not clearly portrayed.**

- Press **Forte Manager Program --> Picture --> Resolution --> Preferred** to adjust screen automatically to the optimal condition, which fits to the current mode.  
Adjust by selecting **Forte Manager Program --> Picture --> Tracking --> Phase** if adjusted condition is dissatisfactory.
- Check **Control Panel --> Display --> Settings** and see if the frequency or the resolution were changed. If yes, readjust the video card to the recommend resolution.
- Check **Control Panel --> Display --> Settings** and adjust the display to the recommended resolution or adjust the display image to the ideal setting. Set the color setting higher than 24 bits (true color).

● **The screen color is mono or abnormal.**

- Check if the signal cable is properly connected and use a screwdriver to fasten if necessary.
- Make sure the video card is properly inserted in the slot.
- Set the color setting higher than 24 bits (true color) at **Control Panel --> Settings**.

● **The screen blinks.**

- Check if the screen is set to interlace mode and if yes, change it to the recommend resolution.
- Make sure the power voltage is high enough, It has to be higher than **AC100-240V 50/60Hz**.

## Have you installed the display driver?

- |   |  |
|---|--|
| <ul style="list-style-type: none"><li>● <b>Have you installed the display driver?</b></li><br/><li>● <b>Do you see an "Unrecognized monitor, Plug&amp;Play (VESA DDC) monitor found" message?</b></li></ul> | <ul style="list-style-type: none"><li>• Be sure to install the display driver from the display driver CD (or diskette) that comes with your display. Or, you can also download the driver from our web site: <a href="http://www.lge.com">http://www.lge.com</a>.</li><br/><li>• Make sure to check if the video card supports Plug&amp;Play function.</li></ul> |
|---|--|

# Specifications

<b>Display</b>	19 inches (48.19cm) Flat Panel Active matrix-TFT LCD Anti-Glare coating 19 inches viewable 0.294mm pixel pitch	
<b>Sync Input</b>	Horizontal Freq.	30 - 83kHz (Analog) 30 - 71kHz (Digital)
	Vertical Freq.	56 - 75Hz (Automatic)
	Input Form	Separate TTL, Positive/Negative SOG (Sync On Green) Digital
<b>Video Input</b>	Signal Input	DVI - Analog connector DVI - Digital connector
	Input Form	RGB Analog (0.7Vp-p/75ohm), Digital
<b>Resolution</b>	Max	DVI Digital: VESA 1280 x 1024@60Hz D-sub Analog: VESA 1280 x 1024@75Hz
	Recommend	VESA 1280 x 1024@60Hz
<b>Plug&amp;Play</b>	DDC 2B	
<b>Power Consumption</b>	On Mode	: 39W
	Sleep Mode	≤ 2W
	Off Mode	≤ 1W
<b>Dimensions &amp; Weight (with tilt stand)</b>	Width	41.65 cm / 16.39inches
	Height	42.89 cm / 16.88 inches [L1900E]
		43.20 cm / 17.00 inches [L1900R], [L1900J]
	Depth	14.45 cm / 5.68 inches [L1900E]
		14.84 cm / 5.84 inches [L1900R]
		11.34 cm / 4.65 inches [L1900J]
Net	5.8 kg (12.79 lbs) [L1900E] 6.8 kg (14.99 lbs) [L1900R] 5.54 kg (12.21 lbs) [L1900J]	
<b>Tilt Range</b>	Tilt	0°~20°
<b>Power Input</b>	12V $\equiv$ 3.0A	
<b>AC/DC Adapter</b>	DVE. DSA-0421S-12 1	
<b>Environmental Conditions</b>	Operating Conditions	
	Temperature	10°C to 35 °C
	Humidity	10 % to 80 % non-Condensing
	Storage Conditions	
Temperature	-20°C to 60 °C	
Humidity	5 % to 90 % non-Condensing	
<b>Tilt Stand</b>	Attached( O ), Detachable ( )	
<b>Signal cable</b>	Attached( ), Detachable ( O )	
<b>Power cord</b>	Wall-outlet type or PC-outlet type	

## NOTE

- Information in this document is subject to change without notice.

## Preset Modes (Resolution)

Display Modes (Resolution)			Horizontal Freq. (kHz)	Vertical Freq. (Hz)
1	VGA	640 x 350	31.469	70
2	VGA	720 x 400	31.468	70
3	VGA	640 x 480	31.469	60
4	VESA	640 x 480	37.500	75
5	VESA	800 x 600	37.879	60
6	VESA	800 x 600	46.875	75
7	MAC	832 x 624	49.725	75
8	VESA	1024 x 768	48.363	60
9	VESA	1024 x 768	60.023	75
10	MAC	1152 x 870	68.681	75
11	VESA	1152 x 900	61.805	65
*12	VESA	1280 x 1024	63.981	60
**13	VESA	1280 x 1024	79.976	75

\* Recommend Mode

\*\* Only Analog Mode

## Indicator

### [L1900E]

MODE	LED Color
On Mode	Blue or Red
Sleep Mode	Automatic blinking
Off Mode	Off

### [L1900J, L1900R]

MODE	LED Color
On Mode	Blue or Red
Sleep Mode	From dark to bright mode is repeated
Off Mode	Off

## Kensington Security



**Kensington Security Slot**  
Connected to a locking  
cable that can be purchased  
separately at most computer  
stores



Product color represented here may differ from actual product color that customer purchased.

